
Zimbra™ Collaboration Suite Single Server Installation Network Edition

The Zimbra Collaboration Suite includes the Zimbra MTA, the Zimbra LDAP server, and the Zimbra mailbox server. In a single-server installation, all components are installed on one server and require no additional manual configuration.

This installation guide is a quick start guide that describes the basic steps needed to install and configure the Zimbra Collaboration Suite in a direct network connect environment. In this environment, the Zimbra server is assigned a domain for which it receives mail, and a direct network connection to the Internet. When the Zimbra Collaboration Suite is installed, you will be able to log on to the Zimbra administration console to manage the domain and provision accounts. The accounts you create will be able to send and receive external email.

This guide includes the following sections:

- Important Notice About Single Server Installations
- Installation Prerequisites
- Configure DNS
- Overview of Installation Process
- Downloading the Zimbra Software
- Zimbra License Requirements for ZCS Network Edition
- Basic Configuration
- Installing Zimbra Software
- Provisioning Accounts
- Support and Contact Information

Important Notice About Single Server Installations

The Zimbra Collaboration Suite is designed to be the only application suite installed on the server. The Zimbra Collaboration Suite bundles and installs, as part of the installation process various other third party and open source software, including Apache Jetty, Postfix, OpenLDAP®, and MySQL®. The versions installed have been tested and configured to work with the Zimbra software. See the Administration Guide for a complete list of software.

Note: A Zimbra license is required in order to create accounts on the Network Edition Zimbra Collaboration Suite server. You cannot install ZCS without a license. See “Zimbra License Requirements for ZCS Network Edition” on page 9.

Table 1 shows that default port settings when the Zimbra Collaboration Suite is installed.

Table 1 Zimbra Port Mapping

	Port
Remote Queue Manager	22
Postfix	25
HTTP	80
POP3	110
IMAP	143
LDAP	389
HTTPS	443
Mailboxd IMAP SSL	993
Mailboxd POP SSL	995
Mailboxd LMTP	7025

Important: You cannot have any other web server, database, LDAP, or MTA server running, when you install the Zimbra software. If you have installed any of the applications, before you install Zimbra software, disable these applications. During the ZCS install, Zimbra makes global system changes that may break applications that are on your server.

Installation Prerequisites

In order to successfully install and run the Zimbra Collaboration Suite, ensure your system meets the requirements described in this section. System administrators should be familiar with installing and managing email systems.

System Requirements

For the ZCS system requirements see [System Requirements for Zimbra Collaboration Suite 5.0](#)

Note: To find SSH client software, go to Download.com at <http://www.download.com/> and search for SSH. The list displays software that can be purchased or downloaded for free. An example of a free SSH client software is PuTTY, a software implementation of SSH for Win32 and Unix platforms. To download a copy go to <http://putty.nl/>.

Modifying Operating System Configurations

Configuration modifications for two of the most frequently used operating systems, Red Hat Enterprise Linux and Fedora, are described in this guide. The SUSE configuration would be similar to those described for the Red Hat Enterprise Linux. The Mac OS requires no additional modifications.

Other operating systems may require similar modifications, use this information as a reference to gauge whether your operating system may need to be modified. Also, search the [Zimbra Forums](#) and [Zimbra Wiki](#).

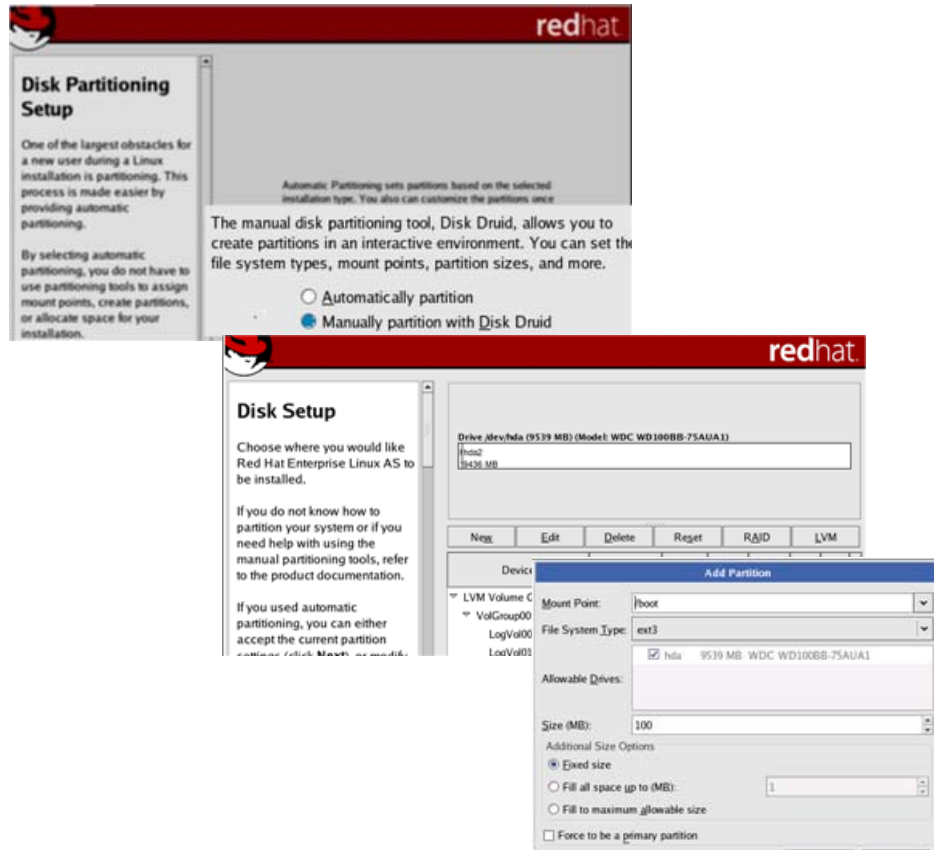
Important: Zimbra recommends that the operating systems you use is updated with the latest patches that have been tested with ZCS. See the latest release notes to see the operating systems patch list that has been tested with ZCS.

Installation Modifications for Red Hat® Enterprise Linux®

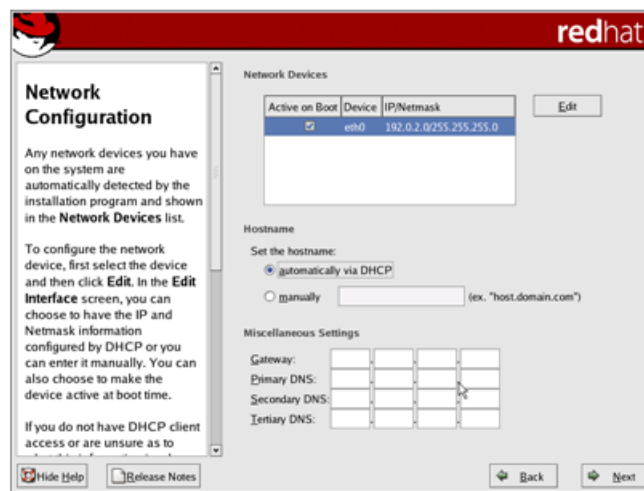
The Zimbra Collaboration Suite runs on the Red Hat Enterprise Linux, version 4 operating system. When you install the Red Hat software for the Zimbra Collaboration Suite, accept the default setup answers, except for the Disk Partition Setup, the Network Configuration, the Gateway and Primary DNS addresses, the Edit Interface, and the Firewall Configuration. Details of what should be modified in these categories are listed below. Refer to the Red Hat Enterprise Linux installation guide for detailed documentation about installing their software.

Important:

- **Disk Partitioning Setup.** Check **Manually partition with DiskDruid**. The disk partition should be set up as follows:
 - The **Mount Point/RAID Volume** size for the **Boot** partition (/) should be 100 MB.
 - The **Swap** partition should be set to twice the size of the RAM on your machine.
 - The **Root** partition (/) should be set with the remaining disk space size.

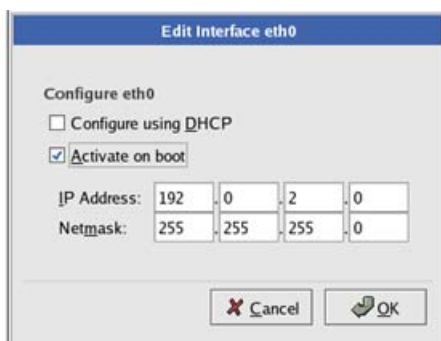


- **Network Configuration>Network Devices>Hostname** should be configured manually with the fully qualified hostname [*mailhost.example.com*] of the Zimbra server.



- Enter the **Gateway** and **Primary DNS** addresses.

- In the **Edit Interface** pop-up screen, check **Activate on Boot**. Enter the **IP Address** and **Netmask** of the device. This allows the interface to start when you boot.



- **Firewall Configuration** should be set to **No firewall**, and the **Security Enhanced Linux (SELinux)** should be disabled.

Important: You will need to disable Sendmail in order to run the Zimbra Collaboration Suite. You can disable the Sendmail service with these commands: `chkconfig sendmail off, service sendmail stop`.

Important: Make sure that FQDN entry in `/etc/hosts` appears before the hostnames. If this is missing, the creation of the Zimbra certificate fails. The FQDN entry should look like this example. See `zmcreatecert` in the *Administrator's Guide*, Appendix A: Command-Line Utilities.

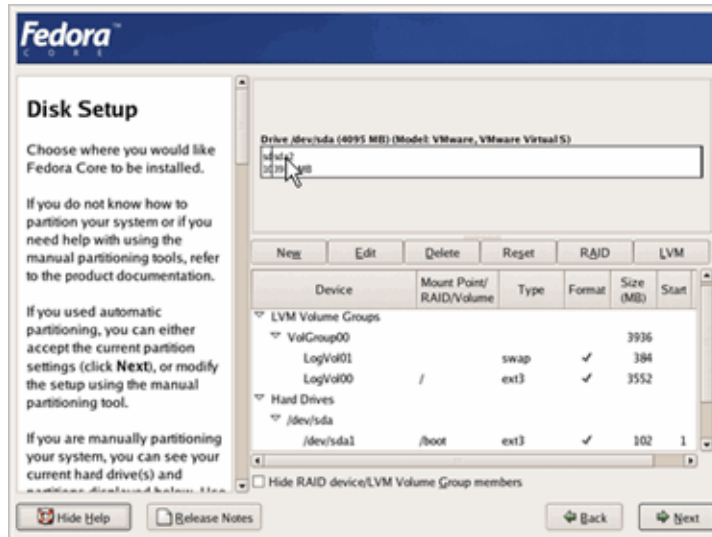
127.0.0.1	localhost.localdomain localhost
your.ip.address	FQDN yourhostname

Installation Modifications for Fedora™

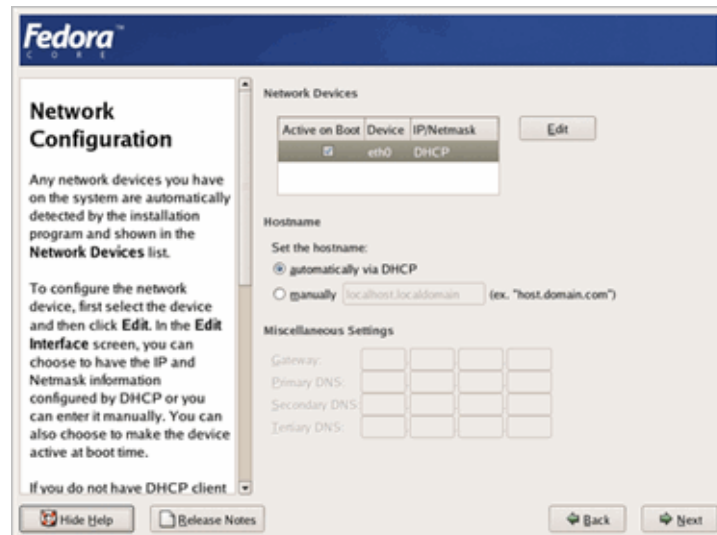
The Zimbra Collaboration Suite runs on the Fedora, Core 4 operating system. When you install the Fedora software for the Zimbra Collaboration Suite, accept the default setup answers, except for the Disk Partition Setup, the Network Configuration, the Gateway and Primary DNS addresses, the Edit Interface, and the Firewall Configuration. Details of what should be modified in these categories are listed below. Refer to the Fedora installation guide for detailed documentation about installing their software.

- **Disk Partitioning Setup.** Check **Manually partition with DiskDruid**. The disk partition should be set up as follows:
 - The **Mount Point/RAID Volume** size for the **Boot** partition (`/`) should be 100 MB.
 - The **Swap** partition should be set to twice the size of the RAM on your machine.

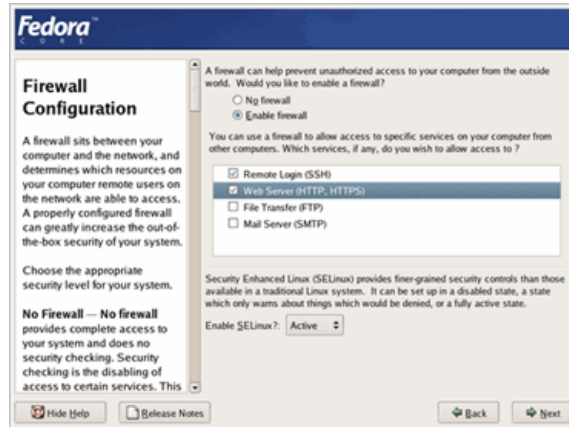
- The **Root** partition (/) should be set with the remaining disk space size.



- **Network Configuration>Network Devices>Hostname** should be configured manually with the hostname name [*mailhost.example.com*] of the Zimbra server.



- Enter the **Gateway** and **Primary DNS** addresses.
- In the **Edit Interface** pop-up screen, check **Activate on Boot**. Enter the **IP Address** and **Netmask** of the device. This allows the interface to start when you boot.
- **Firewall Configuration** should be set to **No firewall**, and the **Security Enhanced Linux (SELinux)** should be disabled.



Important: The following should also be considered before you install the Zimbra Collaboration Suite:

- You must disable Sendmail in order to run the Zimbra Collaboration Suite application. The Sendmail command to stop the service is `/etc/init.d/sendmail stop`. To disable is `chkconfig sendmail off`. The Postfix command to stop the service is `/etc/init.d/postfix stop`. To disable is `chkconfig postfix stop`.
- Make sure that FQDN entry in `/etc/hosts` appear before the hostnames. If this is missing, the creation of the Zimbra certificate fails. The FQDN entry should look like this example.

```
127.0.0.1          localhost.localdomain localhost
your.ip.address   FQDN yourhostname
```

Installation Modifications for Mac OS® Servers

No modifications are required for Mac OS servers, but Java 1.5 must be set as the default Java.

To set Java 1.5 as the default:

- `su - root`
- `cd /System/Library/Frameworks/JavaVM.Framework/Versions`
- `rm CurrentJDK`
- `ln -s 1.5.0 CurrentJDK`

Configure DNS

In order to send and receive email, the Zimbra MTA must be configured in DNS with both A and MX records. For sending mail, the MTA uses DNS to

resolve hostnames and email-routing information. To receive mail the MX record must be configured correctly to route the message to the mail server.

During the installation process ZCS checks to see if you have an MX record correctly configured. If it is not, an error is displayed suggesting that the domain name have an MX record configured in DNS.

You must configure a relay host if you do not enable DNS. After ZCS is installed, go to the **Global Settings>MTA** tab on the administration console and uncheck **Enable DNS lookups**. Enter the relay MTA address to use for external delivery.

Note: *Even if a relay host is configured, an MX record is still required if the ZCS server is going to receive email from the Internet.*

Overview of Installation Process

When you run the install script, the Zimbra install verifies that the correct prerequisite packages are available to be installed.

- **Zimbra Core** installs the libraries, utilities, and monitoring tools.
- **Zimbra LDAP** installs the OpenLDAP software, which provides open source LDAP directory services.
- **Zimbra MTA** installs the Postfix open source MTA, the Clam AntiVirus antivirus engine, the SpamAssassin junk mail filter, and the Amavisd-New content filter.
- **Zimbra Store** installs the mailbox server, including Jetty, the servlet container for the Zimbra server.
- **Zimbra Spell** installs the Aspell open source spelling checker. When Zimbra spell is installed, Zimbra-Apache is also installed.
- **Zimbra SNMP** installs the SNMP package for monitoring. This package is optional.
- **Zimbra Logger** installs tools for syslog aggregation, reporting, and message tracing. If you do not install Logger, you cannot use the message trace feature, the server statistics are not captures, and the server statistics section of the administration console does not display.
- **Zimbra Proxy** installs the proxy feature. Using an IMAP/POP proxy server allows mail retrieval for a domain to be split across multiple Zimbra servers on a per user basis.
- **Zimbra Archiving** installs the Zimbra Archiving and Discovery feature. This is an optional feature for ZCS Network Edition that offers the ability to store and search all messages that were delivered to or sent by ZCS. When this package is installed on the mail server, the cross mailbox search function is enabled. Using the Archiving and Discovery feature can trigger additional mailbox license usage. To find out more about Zimbra Archiving and Discovery, contact Zimbra sales.

The Zimbra server configuration is menu driven. The installation menu shows you the default configuration values. The menu displays the logical host name and email domain name [mailhost.example.com] as configured on the computer. You can change any of the values. For single server installs, you must define the administrator's password, which you use to log on to the administration console, and you specify the location of the Zimbra license xml file.

Downloading the Zimbra Software

For the latest Zimbra software download, go to www.zimbra.com. Save the Zimbra Collaboration Suite archive file to the computer from which you will install the software.

Zimbra License Requirements for ZCS Network Edition

A Zimbra license is required in order to create accounts in the Network Edition Zimbra Collaboration Suite servers.

A trial license and a regular license are available:

- **Trial.** You can obtain the trial license from the Zimbra license portal for free. The trial license allows you to create up to 50 users. It expires in 60 days.
- **Regular.** You must purchase the Zimbra Regular license. This license is valid for a specific Zimbra Collaboration Suite system and is encrypted with the number of Zimbra accounts (seats) you have purchased, the effective date, and expiration date of the regular license.

Go to Zimbra's Website to obtain a trial license from the Network Downloads area. Contact Zimbra sales to purchase a regular license, by emailing sales@zimbra.com or calling 1-650-212-7767, extension 100.

The regular license can only be installed on the ZCS system for which it is purchased. Only one Zimbra license is required for your Zimbra Collaboration Suite environment.

Current license information, including the number of accounts purchased, the number of accounts used, and the expiration date, can be viewed from **Global Settings>License** tab on the administration console.

Basic Configuration

The default configuration installs the Zimbra-LDAP, the Zimbra-MTA with anti-virus and anti-spam protection, the Zimbra mailbox server, the SNMP monitoring tools (optional), Zimbra-spell (optional), the logger tool (optional), and the Zimbra proxy (optional) on one server.

The menu driven installation displays the components and their existing default values. The During the installation process you can modify the information.

The table below describes the menu options

Table 2 Main Menu Options

Main Menu	Description
1) Common Configuration - These are common settings for all servers	
Hostname	The host name configured in the operating system installation
LDAP master host	The LDAP host name. On a single server installation, this name is the same as the hostname.
LDAP port	The default port is 389
LDAP Admin password	This is the master LDAP password.
TimeZone	Select the time zone to apply to the default COS. The time zone that should be entered is the time zone that the majority of users in the COS will be located in. The default time zone is PST (Pacific Time).
2) zimbra-ldap	
Create Domain	You can create one domain during installation and additional domains can be created from the administration console.
Domain to create	The default domain is the fully qualified hostname of the server. If you created a valid mail domain on your DNS server, enter it now. In most cases, you will accept the default.
LDAP Root password	The root LDAP password for internal LDAP operations.
LDAP Replication password	This is the password used by the LDAP replication user to identify itself to the LDAP master and must be the same as the password on the LDAP master server.
LDAP Postfix password	This is the password used by the postfix user to identify itself to the LDAP server and must be configured on the MTA server to be the same as the password on the LDAP master server.

Table 2 Main Menu Options

Main Menu	Description
LDAP Amavis password	This is the password used by the amavis user to identify itself to the LDAP server and must be configured on the MTA server to be the same as the password on the LDAP server.
3) zimbra-store	
Create Admin User	The administrator account is created during installation. This account is the first account provisioned on the Zimbra server and allows you to log on to the administration console.
Admin user to create	The default is admin@[mailhost.example.com].
Admin Password	You must set the admin account password. The password is case sensitive and must be a minimum of six characters. The administrator name, mail address, and password are required to log in to the administration console.
Enable automated spam training	<p>By default, the automated spam training filter is enabled and two mail accounts are created.</p> <ol style="list-style-type: none"> 1. Spam Training User to receive mail notification about mail that was not marked as junk, but should have been. 2. Non-spam (HAM) Training User to receive mail notification about mail that was marked as junk, but should not have been. <p>These addresses are automatically configured to work with the spam training filter. The accounts created have a randomly selected name. To recognize what the account is used for you may want to change this name.</p>
Global Documents Account	The Global Documents account is automatically created when ZCS is installed. The Global Documents account holds the templates and the default Documents Notebook. The Documents feature is enabled from the COS or for individual accounts

Table 2 Main Menu Options

Main Menu	Description
The default port configurations are shown	<ul style="list-style-type: none"> • SMTP host • Web server HTTP port: 80 • Web server HTTPS port: 443 • Web server mode — Can be HTTP, HTTPS, mixed, or redirect. Mixed mode uses HTTPS for logging in and HTTP for normal session traffic. Redirect mode redirects any users connecting via HTTP to a HTTPS connection. All modes use SSL encryption for back-end administrative traffic. <p><i>Note: Selecting both will set it to mixed.</i></p> <ul style="list-style-type: none"> • IMAP server port: 143 • IMAP server SSL port: 993 • POP server port: 110 • POP server SSL port: 995 • Use spell checker server, default Yes (if installed) • Spell server URL: http://<example.com>:7780/aspell.php
License file name	Unset (Network Edition). The license file must be saved to the server in order to add the license file to ZCS during the install process. Enter the name and location for the Zimbra license file and the license is installed as part of the installation.

Table 2 Main Menu Options

Main Menu	Description
5) Zimbra-MTA	<ul style="list-style-type: none"> • MTA Auth host — This is configured automatically if the MTA authentication server host is on the same server, but must be configured if the authentication server is not on the MTA. • Enable Spamassassin — Default is enabled. • Enable ClamAV — Default is enabled. • Notification address for AV alerts — Sets the notification address for AV alerts. You can either accept the default or create a new address. If you create a new address, remember to provision this address from the admin console. <p><i>Note: If the virus notification address does not exist and your host name is the same as the domain name on the Zimbra server, the virus notifications queue in the Zimbra MTA server and cannot be delivered.</i></p> <ul style="list-style-type: none"> • Bind password for Postfix LDAP user. Automatically set. This is the password used by the postfix user to identify itself to the LDAP server and must be configured on the MTA server to be the same as the password on the LDAP master server. • Bind password for Amavis LDAP user. Automatically set. This is the password used by the amavis user to identify itself to the LDAP server and must be configured on the MTA server to be the same as the password on the LDAP server.
5) zimbra-snmp (optional)	<ul style="list-style-type: none"> • Enable SNMP notifications — The default is Yes. • SNMP Trap hostname • Enable SMTP notification — The default is Yes. • SMTP Source email address • SMTP Destination email address
6) zimbra-logger	When installed, it is automatically enabled. This information is used to generate the statistics graphs and is used for message tracing.
7) zimbra-spell	(optional) When installed, it is automatically enabled.

Table 2 Main Menu Options

Main Menu	Description
8) Default Class of Service Configuration:	
This menu lists major new features for the ZCS release and whether the feature is enabled or not. When you change the feature setting during ZCS installation, you change the default COS settings.	
Enable default backup schedule	For the Network Edition only, sets the schedule for Backup session to run as a full backup every Sunday at 1 a.m. and as incremental on the other days at 1 a.m.
r) Start servers after configuration	When the installation and configuration is complete, if this is set to Yes , the Zimbra server is automatically started.
s) Save config to file	At any time during the installation, you can save the configuration to file.
q) Quit	Quit can be used at any time to quit the installation.

Installing Zimbra Software

For servers other than Mac servers, open an SSH session to the Zimbra server and follow the steps below.

For Macs, see “Installing Zimbra Software on a Mac Server” on page 20.

1. Log in as `root` to the Zimbra server and `cd` to the directory where the Zimbra Collaboration Suite archive tar file is saved (`cd /var/<tmp>`). Type the following commands:
 - `tar xzvf [zcsfullfilename.tgz]`, to unpack the file
 - `cd [zcsfullfilename]` to change to the correct directory.
 - `./install.sh`, to begin the installation

The `install.sh` script reviews the installation software to verify that the Zimbra packages are available.

```
[root@mailhost tmp]# tar xzvf zcs.tgz
zcs-NETWORK-5.0.0_1707.RHEL4.20071105201315/
zcs-NETWORK-5.0.0_1707.RHEL4.20071105201315/packages/
zcs-NETWORK-5.0.0_1707.RHEL4.20071105201315/packages/zimbra-logger-
5.0.0_1707.RHEL4-200
.
.
zcs-NETWORK-5.0.0_1707.RHEL4.20071105201315/packages/zimbra-ldap-
5.0.0_1707.RHEL4-20071
105201315.i386.rpm
zcs-NETWORK-5.0.0_1707.RHEL4.20071105201315/data/
zcs-NETWORK-5.0.0_1707.RHEL4.20071105201315/data/backup-version-
init.sql
zcs-NETWORK-5.0.0_1707.RHEL4.20071105201315/data/versions-init.sql
zcs-NETWORK-5.0.0_1707.RHEL4.20071105201315/bin/
zcs-NETWORK-5.0.0_1707.RHEL4.20071105201315/bin/checkValidBackup
zcs-NETWORK-5.0.0_1707.RHEL4.20071105201315/bin/zmdbintegrityreport
zcs-NETWORK-5.0.0_1707.RHEL4.20071105201315/bin/get_plat_tag.sh
zcs-NETWORK-5.0.0_1707.RHEL4.20071105201315/readme_binary.txt
.
.
.
zcs-NETWORK-5.0.0_1707.RHEL4.20071105201315/util/addUser.sh
[root@infodev tmp]# cd zcs-NETWORK-5.0.0_1707.RHEL4.20071105201315/
[root@infodev zcs-NETWORK-5.0.0_RC3_1707.RHEL4.20071105201315]# ./
install.sh -l

Operations logged to /tmp/install.log.4747
Checking for existing installation...
  zimbra-ldap...NOT FOUND
  zimbra-logger...NOT FOUND
  zimbra-mta...NOT FOUND
  zimbra-snmp...NOT FOUND
  zimbra-store...NOT FOUND
  zimbra-apache...NOT FOUND
  zimbra-spell...NOT FOUND
  zimbra-proxy...NOT FOUND
  zimbra-archiving...NOT FOUND
  zimbra-core...NOT FOUND
```

Screenshots included in this guide are examples of the Zimbra installation script

2. The installation process checks to see if Sendmail, Postfix, and MySQL software are running. If any of these applications is running, you are asked to disable them. Disabling MySQL is optional but highly recommended. Sendmail and Postfix must be disabled for the Zimbra Collaboration Suite to start correctly.
3. The Zimbra software agreement is displayed and includes the link to the license terms for the Zimbra Collaboration Suite. Please read the agreement and, to continue, press **Enter**.

```
PLEASE READ THIS AGREEMENT CAREFULLY BEFORE USING THE SOFTWARE.
ZIMBRA, INC. ("ZIMBRA") WILL ONLY LICENSE THIS SOFTWARE TO YOU IF YOU
FIRST ACCEPT THE TERMS OF THIS AGREEMENT. BY DOWNLOADING OR
INSTALLING THE SOFTWARE, OR USING THE PRODUCT, YOU ARE CONSENTING TO
BE BOUND BY THIS AGREEMENT. IF YOU DO NOT AGREE TO ALL OF THE TERMS
OF THIS AGREEMENT, THEN DO NOT DOWNLOAD, INSTALL OR USE THE PRODUCT.
```

```
License Terms for the Zimbra Collaboration Suite:
http://www.zimbra.com/license/zimbra_network_eval_license.pdf
```

```
Press Return to continue
checking for prerequisites...
  NPTL...FOUND
  sudo...FOUND sudo-1.6.7p5-30.1.3
  libidn...FOUND libidn-0.5.6-1
  curl...FOUND curl-7.12.1-8
  fetchmail...FOUND fetchmail-6.2.5-6
  gmp...FOUND gmp-4.1.4-3
  compat-libstdc++-296...FOUND compat-libstdc++-296-2.96-132.7.2
  compat-libstdc++-33...FOUND compat-libstdc++-33-3.2.3-47.3
  libtool-libs...FOUND libtool-libs-1.5.6-4
  /usr/lib/libstdc++.so.5...FOUND

Checking for installable packages
```

4. Next, the installer checks to see that the prerequisite software is installed. If NPTL, sudo, libidn, cURL, fetchmail, GMP, or compat-libstdc++-, liptool-libs are not installed, the install process stops. You must fix the problem and start the installation over.
5. Select the services to be installed on this server. To install Zimbra Collaboration Suite on a single server, enter **y** for the ldap, logger, mta, snmp, store, and spell packages. If you use IMAP/POP Proxy, enter **Y** for the Zimbra proxy package.

Note: For the cross mailbox search feature, install the Zimbra Archive package. To use the archiving and discovery feature, contact Zimbra sales.
6. Type **y** and press **Enter** to modify the system. The selected packages are installed on the server.

```
Select the packages to install

Install zimbra-ldap [Y] Y
Install zimbra-logger [Y] Y
Install zimbra-mta [Y] Y
Install zimbra-snmp [Y] Y
Install zimbra-store [Y] Y
Install zimbra-spell [Y] Y
Install zimbra-archive [N] N
Install zimbra-proxy [N] N

Checking required space for zimbra-core
checking space for zimbra-store

Installing:
  zimbra-core
  zimbra-ldap
  zimbra-logger
  zimbra-mta
  zimbra-snmp
  zimbra-store
  zimbra-apache
  zimbra-spell

The system will be modified. Continue? [N] Y
```

Note: Before the configuration starts, the installer checks to see if the hostname is resolvable via DNS. If there is an error, the installer asks if you would like to change the hostname. We recommend that the domain name have an MX record configured in DNS.

7. At this point the Main menu displays the default entries for the Zimbra component you are installing. To expand the menu to see the configuration values type **x** and press **Enter**. The main menu expands to display configuration details for the package being installed. Values that require further configuration are marked with asterisks (****) to their left

```

Main menu

1) Common Configuration:
   +Hostname:                mailhost.example.com
   +Ldap master host:       mailhost.example.com
   +Ldap port:              389
   +Ldap Admin password:    set
   +TimeZone:               (GMT-08.00) Pacific Time (US &
Canada)

2) zimbra-ldap:            Enabled
   +Create Domain:         yes
   +Domain to create:      mailhost.example.com
   +Ldap Root password:    set
   +Ldap Replication password: set
   +Ldap Postfix password: set
   +Ldap Amavis password:  set

3) zimbra-store:          Enabled
   +Create Admin User:     yes
   +Admin user to create:  admin@mailhost.example.com
   +Admin Password:        set
   +Enable automated spam training: yes
   +Spam training user:    spam.rstn2dbcr@mailhost.example.com
   +Non-spam(Ham) training user: ham.bvjxlryw@mailhost.example.com
   +Global Documents Account: wiki@mailhost.example.com
   +SMTP host:             mailhost.example.com
   +Web server HTTP port:  80
   +Web server HTTPS port: 443
   +Web server mode:       http
   +IMAP server port:      143
   +IMAP server SSL port:  993
   +POP server port:       110
   +POP server SSL port:   995
   +Use spell check server: yes
   +Spell server URL:      http://
mailhost.example.com:7780/aspell.php
   License filename:       UNSET

4) zimbra-mta:            Enabled
6) zimbra-logger:         Enabled
7) zimbra-spell:          Enabled
8) Default Class of Service Configuration:
   +Enable Instant Messaging Feature: Disabled
   +Enable Briefcases Feature:      Disabled
   +Enable Tasks Feature:           Enabled
   +Enable Notebook Feature:        Enabled

9) Enable default backup schedule:  yes
r) Start servers after configuration  yes
s) Save config to file
q) Quit

```

To navigate the Main menu, select the menu item to change. You can modify any of the defaults. See Table 2, Main Menu Options, for a description of the Main menu.

For a quick installation, accepting all the defaults, you only need to do the following:

8. If your time zone is not Pacific time, enter 1 to select **Main menu 1, Common Configuration** and then enter **5** for **TimeZone**. Set the correct time zone.
9. Enter **3** to select **zimbra-store** from the main menu.

```

Store configuration

  1) Status:                               Enabled
  2) Create Admin User:                     yes
  3) Admin user to create:                  admin@mailhost.example.com
** 4) Admin Password                        UNSET
  5) Enable automated spam training:       yes
  6) Spam training user:                   spam@mailhost.example.com
  7) Non-spam(Ham) training user:         ham@mailhost.example.com
  8) Global Documents Account:             wiki@mailhost.example.com
  9) SMTP host:                            mailhost.example.com
 10) Web server HTTP port:                 80
 11) Web server HTTPS port:               443
 12) Web server mode:                      http
 13) IMAP server port:                    143
 14) IMAP server SSL port:                993
 15) POP server port:                     110
 16) POP server SSL port:                  995
 17) Use spell check server:              yes
 18) Spell server URL:                    http://
mailhost.example.com:7780/aspell.php
**19) License filename:                   UNSET

Select, or 'r' for previous menu [r]

```

10. Select the following from the store configuration menu:

- Type **4** and type the admin password. The password must be six or more characters. Press **Enter**.
- Type **19** and type the directory and file name for the Zimbra license. For example, if you saved to the tmp directory, you would type **/tmp/ZCSLicense.xml**. If you do not have the license, you cannot proceed. See “Zimbra License Requirements for ZCS Network Edition” on page 9.

11. Type **r** to return to the Main menu.

12. If you want to change the default Class of Service configuration for the listed new features, type **9 Default Class of Service Configuration**. Then type the number for the feature to be enabled or disabled. Changes you make here are reflected in the default COS configuration.

13. If no other defaults need to be changed, type **a** to apply the configuration changes. Press **Enter**.

14. When **Save Configuration data to file** appears, type **Yes** and press **Enter**.
15. The next request is where to save the files. To accept the default, press **Enter**. To save the files to another directory, enter the directory and then press **Enter**.
16. When **The system will be modified - continue?** appears, type **Yes** and press **Enter**.
The server is modified. Installing all the components and configuring the server can take a few minutes.
17. When **Configuration complete - press return to exit** displays, press **Enter**.
The installation is complete and the servers are started.

Installing Zimbra Software on a Mac Server

1. Click on the dmg file to open the file and then click **ZCS.mpkg** to open the Zimbra install package. The Apple installer opens and verifies that the server is ready to install the Zimbra Collaboration Suite. Click **Continue**.
2. Welcome screen appears, click **Continue**.
3. The Zimbra Software License Agreement is displayed. Read the agreement and click **Continue**. A popup screen appears asking that to continue the install you must accept the terms of the license agreement. Click **Agree**.
4. Select the destination volume to install the software. Click **Continue**.
5. The **Easy Install** dialog displays. Now you select which services to be installed on this server. To install all service packages on a single server, click **Install**.
To select which services to install, click **Customize**. Deselect those packages you do not want installed. See "Overview of Installation Process" on page 8 for information about the packages. Click **Install** to proceed.
A progress bar shows the Zimbra packages being installed. When **The software was successfully installed** dialog displays, click **Close**.
6. Open the Apple Terminal and log on as **root**. Type **sudo /bin/bash**. Enter your root password, if asked.
7. To install the Zimbra license file during the ZCS install, copy the **ZCSLicense.xml** file to **/opt/zimbra/conf**.
8. Type **cd /opt/zimbra/libexec**
9. Type **ls** to see the packages in the directory.
10. Type **./zmsetup.pl**. This starts the ZCS configuration. A temporary log file is created and the server port configurations are checked for conflicts. The installation process checks to see if Sendmail, Postfix, and MySQL software are running. If any of these applications are running, you are

asked to disable them. Disabling MySQL is optional but highly recommended. Sendmail and Postfix must be disabled for the Zimbra Collaboration Suite to start correctly.

11. If no conflicts are found, the Main menu displays the default entries for the Zimbra component you are installing. To expand the menu to see the configuration values type **x** and press **Enter**. The main menu expands to display configuration details for the package being installed. Values that require further configuration are marked with asterisks (****).
12. Go to [Step 6](#) on page [16](#) to continue the installation steps.

Verify Zimbra Server Operation

When **Configuration complete!** appears, the installation is finished and the server has been started.

To verify that the server is running:

1. Type `su - zimbra`.
2. Type `zmcontrol status`. The services status information is displayed. All services should be running.

Note: *If services are not started, type `zmcontrol start`.*

See the [Administration Guide](#), Appendix A: Command-Line Utilities for more `zmcontrol` commands.

Provisioning Accounts

Once the mailbox server is running, open your browser, enter the administration console URL and log on to the console to provision email accounts. The administration console URL is entered as:

`https:[mailhost.example.com]:7071/zimbraAdmin`

Note: *To go to the administration console, you must type **https**, even if you configured the Web server mode as **HTTP**.*

The first time you log on, a certificate authority (CA) alert may be displayed. Click **Accept this certificate permanently** to accept the certificate and be able connect to the Zimbra administration console. Then click **OK**.

Enter the admin user name and password configured during the installation process. Enter the name as `admin@mailhost.example.com`.

To provision accounts:

1. From the administration console Navigation pane, click **Accounts**.

Note: Four accounts are listed: admin account, two spam training accounts, and a global Documents account. These accounts do not need any additional configuration.

2. Click **New**. The first page of the **New Account Wizard** opens.
3. Enter the account name to be used as the email address and the last name. This the only required information to create an account.
4. You can click **Finish** at this point, and the account will be configured with the default COS and global features.

If you want to configure aliases, forwarding addresses, and specific features for this account, proceed through the dialog before you click **Finish**.

When the accounts are provisioned, you can send and receive emails.

Importing Content from User Mailboxes

Zimbra developed different applications to facilitate moving a user's email messages, calendars, and contacts from their old email servers to their accounts on the Zimbra server. When the user's files are imported, the folder hierarchy is maintained. Use one of the ZCS utilities to move user mail to ZCS to guarantee that all information is imported correctly.

The following applications can be accessed from the administration console Download page, and instruction guides are available from the Help Desk page or from the Zimbra Website, Documents page.

- **ZCS Migration Wizard for Exchange.** Format is an **.exe** file. You can migrate users from Microsoft® Exchange server email accounts to Zimbra server accounts.
- **ZCS Migration Wizard for Lotus® Domino®.** Format is an **.exe** file. You can migrate users from Lotus Domino server email accounts to Zimbra server accounts.
- **Zimbra Collaboration Suite Import Wizard for Outlook®.** Format is an **.exe** file. Users download the Import Wizard to their computers and run the executable to import their Outlook **.pst** files to the Zimbra server. Before users run this utility, Zimbra recommends that they run the Outlook Inbox Repair tool, **scanpst.exe**, on their **.pst** files, to clean up any errors in their file. For more information about this tool, go to <http://support.microsoft.com/kb/287497>.

Administrator's Account

Initial administrative tasks when you log on for the first time may include setting up the admin mailbox to include features, aliases, and forwarding addresses needed for the administrator's working environment.

Two aliases for the admin account are created during install:

- **Postmaster.** The postmaster address is displayed in emails that are automatically generated from Postfix when messages cannot be sent. If users reply to this address, the message is forwarded to the admin mailbox.
- **Root.** This address is where notification messages from the operating system are sent.

If you didn't change the default during installation, the anti-virus notification is sent directly to the admin account.

Uninstalling Zimbra Collaboration Suite

To uninstall servers you run the `install` script `-u` and then delete the `zcs` directory and remove the `zcs.tgz` file on the servers.

1. `cd` to the original install directory for the `zcs` files.
2. Type `./install.sh -u`.
3. When **Completely remove existing installation?** is displayed, type **Yes**.
The Zimbra servers are stopped, the existing packages, the `webapp` directories, and the `/opt/zimbra` directory are removed.
4. Delete the `zcs` directory, type `rm -rf [zcsfullfilename]`.
5. Delete the `zcs.tgz` file.

Additional Information

To learn more about the Zimbra Collaboration Suite, read the Administrator's Guide and Help. The Zimbra guides and release notes in .pdf format can be found in the `opt/zimbra/docs` directory and is also available from the administration console Help button and from the Zimbra Website.

- **Administrator's Guide.** This guide describes product architecture, server functionality, administration tasks, configuration options, and backup and restore procedures. The guide is available in pdf format from the administrator's console, and HTML format on the Zimbra Website.
- **Administrator Help.** The administrator Help provides detailed instructions about how to add and maintain your servers, domains, and user accounts from the admin console.

Support and Contact Information

Visit www.zimbra.com to join the community and to be a part of building the best open source messaging solution. We appreciate your feedback and suggestions.

- Contact sales@zimbra.com to purchase Zimbra Collaboration Suite.

- Network Edition customers can contact support at support@zimbra.com.
- Explore the Zimbra Forums for answers to installation or configurations problems.
- Join the [Zimbra Community Forums](#), to participate and learn more about the Zimbra Collaboration Suite.
- Send an email to feedback@zimbra.com to let us know what you like about the product and what you would like to see in the product. Or, if you prefer, post your ideas to the Zimbra Forums.

If you encounter problems with this software, visit www.zimbra.com and submit a bug report. Make sure you provide enough detail so that the bug can be easily duplicated.

Zimbra Inc. Copyright Zimbra, Inc. 2005-2007. All rights reserved. The Zimbra logo and logo type are trademarks of Zimbra, Inc.

All other marks are the property of their respective owners.

Zimbra, Inc.
700 First Street
Sunnyvale, California 94089 USA
408.349.3000
www.zimbra.com
ZCS 5.0 12172007

System Requirements for Zimbra Collaboration Suite 5.0

Zimbra Collaboration Suite system requirements for both the Network Edition and the Open Source Edition.

	Requirements
Servers	<p>Evaluation and Testing</p> <ul style="list-style-type: none">• Intel/AMD 32-bit or 64-bit CPU 1.5 GHz• 1 GB RAM• 5 GB free disk space for software and logs• Temp file space for installs and upgrades*• Additional disk space for mail storage <p>Production environments</p> <ul style="list-style-type: none">• Intel/AMD CPU 32-bit 2.0 GHz+. For large deployments (more than 2000 users), 64-bit OS is recommended.• Minimum - 2 GB RAM Recommend - 4 GB• Temp file space for installs and upgrades*• 10 GB free disk space for software and logs (SATA or SCSI for performance, and RAID/Mirroring for redundancy)• Additional disk space for mail storage <p>*Temp files space- The zimbra-store requires 5GB for /opt/zimbra, plus additional space for mail storage. The other nodes require 100MB.</p> <p>General Requirements</p> <ul style="list-style-type: none">• Firewall Configuration should be set to “No firewall”, and the Security Enhanced Linux (SELinux) should be disabled• RAID-5 is not recommended for installations with more than 100 accounts.

Mac Server	<p>Evaluation and Testing</p> <ul style="list-style-type: none"> • Intel Core Solo, or Intel Core Duo* • 1 GB RAM • 5 GB free disk space for software and logs • Additional disk space for mail storage
Mac Server continued	<p>Production environments</p> <ul style="list-style-type: none"> • Intel Core Solo, or Intel Core Duo* • Minimum - 2 GB RAM Recommend - 4 GB • 10 GB free disk space for software and logs • Additional disk space for mail storage <p>*There are known issues using ZCS on Macs with the Intel Core Duo. See the Release Note.</p>
<p>Operating System Network Edition</p>	<ul style="list-style-type: none"> • Red Hat® Enterprise Linux®, AS/ES 4 and Red Hat® Enterprise Linux®, AS/ES5. (32-bit, 64-bit) For clustering, version 4, update 3 is required. The operating system must be configured as described in this guide. • Mac OS® X 10.4.7 Note: Max OS X server installs, the following features are not included: attachment indexing/search, view attachments as HTML, clustering. • SUSE ES 10 and SUSE ES 10 (64-bit) Note: SUSE server installs, the following features are not included: clustering • Ubuntu 6.06.1 LTS • rPath VMware
<p>Operating System Open Source Edition</p>	<p>In addition to supporting the operating systems listed above for the Network Edition, other OS versions are available for the Open Source Edition. Check the Zimbra Open Source Downloads page on www.zimbra.com.</p>

Other Dependencies	<p>For Red Hat Enterprise, Fedora Core and SuSE operating systems, the server must also have the following installed:</p> <ul style="list-style-type: none"> • NPTL. Native POSIX Thread Library • Sudo. Superuser, required to delegate admins. • libidn. For internationalizing domain names in applications (IDNA) • cURL. A command line tool for transferring files with URL syntax • fetchmail. A remote-mail retrieval and forwarding utility used for on-demand TCIP/IP links. • GMP. GNU Multiple-Precision Library. • compat-libstdc ++-33. Compatibility Standard C++ libraries. NOTE: The 32-bit version of the compat-libstdc rpm package is required for both 32-bit or 64-bit servers. • For Red Hat Enterprise only: compat-libstdc ++-296
	<p>For Mac servers, Java 1.5 must be installed as the default Java.</p>
Miscellaneous	<ul style="list-style-type: none"> • SSH client software to transfer and install the Zimbra Collaboration Suite software. • Valid DNS configured with an A record and MX record • Servers should be configured to run Network Time Protocol (NTP) on a scheduled basis
Administrator Computers *These OS configurations have been tested and are known to work. Other configurations may work.	<ul style="list-style-type: none"> • Windows XP with either Internet Explorer 7.0 and 6.0 SP2 or Firefox 1.5.x and 2.0 • Macintosh OS X 10.4 with Firefox 1.5 and 2.0

<p>End User Computers using Zimbra Web Client *These OS configurations have been tested and are known to work. Other configurations may work.</p>	<p>Minimum</p> <ul style="list-style-type: none"> • Intel/AMD/Power PC CPU 750MHz • 256MB RAM <p>Recommended</p> <ul style="list-style-type: none"> • Intel/AMD/Power PC CPU 1.5GHz • 512MB RAM <p>Operating system/ browser combinations</p> <ul style="list-style-type: none"> • Windows XP with either Internet Explorer 7 and 6.0 SP 2 or Firefox 1.5.x and 2.0 • Fedora Core 4 with Firefox 1.5 and 2.0 • Mac OS X 10.4 with Firefox 1.5 and 2.0 or Safari (Beta)
<p>End User Computers Using Other Clients *These OS configurations have been tested and are known to work. Other configurations may work.</p>	<p>Minimum</p> <ul style="list-style-type: none"> • Intel/AMD/Power PC CPU 750MHz • 256MB RAM <p>Recommended</p> <ul style="list-style-type: none"> • Intel/AMD/Power PC CPU 1.5GHz • 512MB RAM <p>Operating system POP/IMAP combinations</p> <ul style="list-style-type: none"> • Windows XP with either Outlook Express 6, Outlook 2003 (MAPI), or Thunderbird 1.0.7 • Fedora Core 4 with Thunderbird 1.0.7 • Mac OS X 10.4 with Apple Mail
<p>Monitor</p>	<p>Display minimum resolution 1024 x 768</p>
<p>Internet Connection Speed</p>	<p>128 kbps or higher</p>

Migration Wizard Requirements

Migration Wizard for Exchange - Accounts from Microsoft Exchange 2000, 2003, 2007 and 5.5 can be migrated to Zimbra Collaboration Suite.

Migration Wizard for Lotus Dominos - Accounts from Lotus Domino 6.0 or later can be migrated to Zimbra Collaboration Suite.

Import Wizard Requirements

Contents of a .pst file from accounts using Microsoft® Outlook® 2003 and 2007 can be imported to accounts on the Zimbra server.

Zimbra Mobile for Network Edition only

Zimbra Mobile provides mobile data access to email, calendar, and contacts for users of selected mobile phones.

Zimbra Mobile supports native synchronization with the following devices.

- Treo™ 650 , Treo 700w
- Windows Mobile 5 devices

Zimbra Mobile supports synchronization with the following devices via “Mail for Exchange”.

- Symbian S60/S80 smart devices such as Nokia E Series

Note: Zimbra Connector for BES is in Beta for ZCS 5.0.

ZCS 5.0 12/19/2007

